

# THE UPPER HUTT CONNECTION



A LOCAL NEWSPAPER - FOR THE COMMUNITY, BY THE COMMUNITY

The Upper Hutt Connection - Wednesday Edition:  
12th of November 2025

Website: [uhconnection.co.nz](http://uhconnection.co.nz)  
Facebook: [The Upper Hutt Connection](#)  
Contact the editor at: [editor@uhconnection.co.nz](mailto:editor@uhconnection.co.nz)

1,090 subscribers receive The Upper Hutt Connection Wednesday Edition in their inbox every Wednesday Morning

## CONTENTS

- [A place for all those events which happen outside Upper Hutt – Introducing Beyond Upper Hutt](#)
- [Average speed camera set to be installed between Brown Owl and Te Mārua](#)
- [A Week at Maidstone: 4th of November – 7th of November](#)
- [Celebration for outgoing Mayor – Wayne Guppy](#)
- [Dawn's Atelier Opens its Doors at City Arcade in Upper Hutt](#)
- [Greater Wellington are wanting your feedback on the flood hazard modelling in Upper Hutt: Submissions close 12th of December 2025](#)
- [New detector dogs head to the Pacific to fight transnational crime](#)
- [Plenty Foods opens in Upper Hutt](#)
- [Postal History Corner: Haywards Camp & Manor Park Camp Post Office](#)
- [Silverstream Hospital event a hit at Wellington Heritage Festival 2025](#)
- [Strengthening Iwi Relationships](#)
- [Two car crashes close the River Road yesterday](#)
- [Upper Hutt City Council adopts Annual Report](#)
- [Send an article to The Upper Hutt Connection](#)

## LETTERS TO THE EDITOR

- [Compulsory voting response to Chris Barnes – Teresa Homan](#)

## SPORTS

- [Cricket results for the weekend: Saturday 8th of November / Sunday 9th of November](#)

## COMMUNITY EVENTS

- [A Magical Winter: Saturday 6th of December / Sunday 7th of December](#)
- [Brew Year's Eve: Wednesday 31st of December, 4.00 pm – 1.00 am](#)
- [Heretaunga Players Double Bill – Flatmates & Bang You're Dead: Thursday 27th of November – Saturday 6th of December](#)
- [Upper Hutt City of Song: Saturday 13th of December, 5.00 pm](#)
- [Upper Hutt Cossie Club looking for the 2026 Charity of the Year: Accepting nominations until the 21st of November](#)
- [You Better Work: Saturday 13th of December / Sunday 14th of December](#)
- [Laugh with Laughing Club: Every Monday, 6.30 pm – 7.30 pm](#)
- [Taoist Tai Chi: Mondays, 6.30 pm – 8.30 pm](#)
- [SeniorNet: Tuesdays 1.30 pm – 2.30 pm](#)
- [Playgroup at St. Hilda's: Wednesday mornings during term time, 9.30 am – 11.00 am](#)

[RETURN TO CONTENTS](#)

- [St. Margaret's Playgroup: Tuesday Mornings, 10.00 am – 11.30 am \(term time only\)](#)
- [Rimutaka Baptist Church Playgroup: Fridays, 9.00 am - 11.30 am during term time](#)
- [Upper Hutt Baptist Church playgroup: 9.30 am – 11.30 am, Tuesday mornings](#)

#### BEYOND UPPER HUTT

- [Give Back This Christmas with Free For All](#)

#### GARAGE SALES

- [Menzshed Upper Hutt Garage Sale: Saturday 22nd of November / Sunday 23rd of November, 10.00 am – 3.00 pm | McLeod Park, McLeod St, Upper Hutt](#)

#### COMMUNITY SUPPORT

- [Strings Attached Ukulele Group](#)
- [The Upper Hutt Womens' Carers' Group](#)

#### RECIPES

- [Recipes](#)

#### BUSINESS ADVERTISING

- [Advertise your business on The Upper Hutt Connection for \\$1 a day, or for \\$10 a week in The Wednesday Edition.](#)

#### WORSHIP SERVICES

- [Heretaunga Community Church](#)
- [St. Margaret's Presbyterian Church - Silverstream](#)
- [Rimutaka Baptist Church](#)
- [St. Hilda's Anglican Church](#)
- [Silverstream Reformed Church](#)
- [Upper Hutt Uniting Parish](#)

#### ENTERTAINMENT

- [What's new at Monterey Cinemas? Releasing 13th of November 2025](#)



AI Generated

## A place for all those events which happen outside Upper Hutt – Introducing Beyond Upper Hutt

Over the past few weeks I've had emails coming in asking if I could advertise and promote events being held in Petone, one being a movie night fundraiser and the other a charity business which is having their Christmas drive.

This created a little bit of a conundrum as I know these events are clearly not in Upper Hutt, but I do like being inviting and accommodating – So I've come up with Beyond Upper Hutt to cater for this. I won't be searching out these events myself, they will only be put up if requested. Beyond Upper Hutt will cover events in the Wellington region – That is up to the border where it then becomes the Manawatu-Whanganui region. This is just north of Otaki on the Kapiti side and just north of Mt. Bruce in the Wairarapa.

*Cheers, Ben Knowles – Editor / Operator @ The Upper Hutt Connection*



1News

## Average speed camera set to be installed between Brown Owl and Te Mārua

An average speed camera is to be installed on state highway 2 in-between Brown Owl and Te Mārua. These operate as a pair of speed cameras, measuring a car's speed at the first one then again at the second – thereby calculating the car's average speed.

NZTA doesn't receive any income from the tickets from these cameras – it instead goes into the Government Consolidated Fund. NZTA took over responsibility for speed cameras from the police in July.

*Source: 1News*

*06/11/25*



Maidstone Intermediate

## A Week at Maidstone: 4th of November – 7th of November

The Year 8 ākonga had their market day last Tuesday, showing off their creativity, teamwork, and entrepreneurial skills.

It's a bit of a sports week at Maidstone: Students represented Maidstone at the Hutt Valley Intermediate Tennis Tournament. There was also the WRISSA Baseball tournament where Maidstone had two wins out of four matches, resulting in solid 5th place finish – and at Thursday night's Competitive Touch all the teams came away with wins.

On Thursday afternoon, the school dance groups took the train into Wellington to see the Royal New Zealand Ballet's *The Nutcracker*. The school dance groups were absolutely captivated by the stunning costumes, beautiful choreography, and the festive spirit of the show.

Elsewhere, others at the Maidstone took part in the Battle of the Fittest! Going head-to-head in the ultimate test of strength, speed, and stamina. The energy was electric, the competition fierce, and the teamwork inspiring. Everyone gave it their all and showed incredible resilience and spirit!

To see all photos associated with this article, please view <https://uhconnection.co.nz/general-news/a-week-at-maidstone-4th-of-november-7th-of-november/>

*Source: Maidstone Intermediate / A "thank you" to Maidstone Intermediate for their permission to share their school news on The Upper Hutt Connection.*

10/11/25

[RETURN TO CONTENTS](#)



Rose Vailima

## Celebration for outgoing Mayor – Wayne Guppy

At a very emotional and historical event, our outgoing Mayor, Wayne Guppy's contribution was recognised and celebrated at Orongomai Marae last Friday. The event was hosted by Malcolm Gillies and Mark Crofsky and included high profile government MPs, regional mayors, and community representatives, representing the profile and national influence he has wielded, ensuring Upper Hutt's influence in the region and nationally. The respect for his leadership was acknowledged by the Marae trustees who celebrated his governance role over the years.

After 24 years at the helm, Wayne has shaped the city in ways few leaders could ever do. During his tenure, the city has renewed its community facilities, encouraged new and vibrant businesses to locate, and enhanced our grass roots community organisations, not just the sports, but also in the arts, culture, wellbeing, diversity and history. Amongst the 250 attendees at the event were representatives from all communities and interests paying tribute.

Wayne took over the reins from Rex Kirton at the beginning of the new century, an extraordinary record of public service and stepping into some big shoes. Now Wayne has made his own contribution to our history.

Special highlights must include the redevelopment of the pool complex which is serving a wide range of people of all ages and communities. In addition, the new business developments at Brewtown, NZCIS, at Wallaceville, the film studio at Lane Street to name just a few. And even today new employers are moving in. Culturally Upper Hutt has changed over the last decades, with a growing and multicultural population.

*A "thank you" to Heather Newell for sending this article to The Upper Hutt Connection.*

11/11/25





*Dawn's Atelier*

## **Dawn's Atelier Opens its Doors at City Arcade in Upper Hutt**

New Artist Studio, Workshops & Gift Shop Offers Unique Creative Experience

Upper Hutt, New Zealand – [12th November 2025] – Dawn's Atelier, a vibrant new space for art, creativity, and community, is excited to announce its opening on 12th November 2025 at City Arcade, 123 Main Street, Upper Hutt. This one-of-a-kind studio will not only feature the captivating work of renowned local artist Dawn Duthie, but also provide a welcoming space for workshops, creative experiences, and a gift shop showcasing handmade items from talented local artisans.

Dawn's Atelier will give visitors the rare opportunity to watch the artist herself at work in her studio, where she specializes in abstract realism, creating stunning pieces in acrylics, graphite drawing, and watercolours. Her signature subjects include insects, birds, and flowers, which she brings to life with a unique perspective and intricate detail.

In addition to the art gallery, the atelier will offer a range of hands-on workshops in watercolour painting and graphite pencil drawing, with an emphasis on wellbeing through creativity. These workshops are designed for all skill levels, whether you are a beginner looking to explore your artistic side, or an experienced artist wanting to refine your technique. Participants will enjoy a calming and supportive environment that encourages personal growth through art.

"I'm not just opening a space to showcase my work, I'm opening a place for the community to gather, create, and grow together," says Dawn Duthie, the artist and founder of Dawn's Atelier. "It's not just about my art – it's about creating community, connecting people with art,

For updates on upcoming workshops and special events, follow Dawn on social media at:

Facebook: <https://www.facebook.com/profile.php?id=100077484573498>

Website: [dawnduthieart.com](http://dawnduthieart.com)

### **About Dawn's Atelier:**

Founded by Dawn Duthie, Dawn's Atelier is a unique artist studio and workshop space located in Upper Hutt, New Zealand. Specializing in abstract realism, Dawn's work focuses on the beauty of insects, birds, and flowers, expressed through a range of media, including acrylics, graphite, and watercolours. Dawn's Atelier also offers workshops that foster creativity and wellbeing, as well as a gift shop featuring handmade creations by local artisans.

*A "thank you" to Dawn Duthie for sending this article to The Upper Hutt Connection.*

06/11/25



Greater Wellington

## Greater Wellington are wanting your feedback on the flood hazard modelling in Upper Hutt: Submissions close 12th of December 2025

### Help us finalise flood hazard maps for Upper Hutt

Flooding impacts more people, more often than any other natural hazard in the Wellington region. Understanding flood risk in our communities is more important than ever with the increase in large-scale weather events.

Greater Wellington and Wellington Water have both modelled the impacts of flooding in Upper Hutt. Greater Wellington has modelled the impacts of heavy rainfall on Te Awa Kairangi/Hutt River, while Wellington Water has modelled the impacts on the stormwater network and runoff on behalf of Upper Hutt City Council. Together, these maps will inform district planning, infrastructure investment, and emergency management planning.

By working with communities to understand flood risks, we can help minimise the impacts on people, businesses, and critical infrastructure

### Why this matters.

Flooding is the most frequent natural hazard in our region. Understanding where flooding could happen helps councils, communities, and landowners to:

- Plan emergency responses
- Protect people, property, and infrastructure
- Make informed land use and development decisions

Greater Wellington and Wellington Water are engaging with the community together to keep things simple. We are hosting combined drop-in sessions so you only need to come to one event to discuss flooding affecting your property or neighborhood.

For more information and how to give your feedback, please click the link: <https://haveyoursay.gw.govt.nz/upper-hutt-flood-modelling>

Source: Greater Wellington

07/11/25

[RETURN TO CONTENTS](#)



Left to Right: Inspector Todd Southall (National Coordinator – Police Dogs), Erin Williams (Senior Project Officer, Overseas Programmes), Constable Ratu Esala Drole & Detector Dog Vena, Sergeant Mike Robinson (Trainer), Constable Sher Singh Junior & Detector Dog Vector, Principal Customs Officer Saimoni Tuiraki (Trainer), Senior Customs Officer Camari Rotukana & Detector Dog Ouzo, Sergeant Matt Fage (Trainer), Customs Officer Andrew Manu & Detector Dog Twiggy, Constable Miracle Malaefono Pose & Detector Dog Yoko, Chief Customs Officer Dave Huff (NZ Customs). – New Zealand Police

## New detector dogs head to the Pacific to fight transnational crime

**New Zealand Police and Customs have congratulated five new handlers and their detector dogs on their graduation from the Police Dog Training Centre (DTC) in Trentham today.**

The teams have completed their training to be qualified as operational Detector Dog Teams and three of the handlers are first time operators.

Two officers from Fiji Police and one from Samoa Police, one officer from Fiji Revenue and Customs Service and one from Tonga Revenue and Customs have proudly marched out at Trentham today.

National Coordinator Police Dogs and Pacific Detector Dog Programme (PDDP) Manager, Inspector Todd Southall, congratulated all the teams.

“These handlers and their dogs have trained here in Upper Hutt for eight weeks and now the rest of the training is completed back in their own jurisdictions under the watchful eyes of advisors from the PDDP,” he says.

New Zealand Police and Customs have a close partnership with our Pacific enforcement partners. The PDDP is part of a commitment to increase safety across the region.

*Continued on Page 7.*

New Zealand Customs' Deputy Chief Executive – International and Governance Joe Cannon said when fully trained, these detector dog and handler teams will be deployed to perform both border security and community policing.

“Today marks a significant milestone in our shared mission to protect Pacific borders and communities.

The graduation of five new detector dog teams boosts our region's capability to detect drugs, cash and firearms, and strengthens our collective response to transnational, serious and organised crime,” Mr Cannon said. “The DTC has been working with Pacific countries for much longer than the PDDP has been running, Inspector Southall says.

“About 20 years ago we started to work with some of the Pacific countries – initially the Cook Islands, Samoa, and Tonga, then later Fiji and now French Polynesia and New Caledonia has been added this year”, says Inspector Southall.

The PDDP officially started in 2018 and is jointly managed by New Zealand Police and Customs. It is funded through the Ministry of Foreign Affairs and Trade.

*Source: New Zealand Police*

07/11/25



## Plenty Foods opens in Upper Hutt

Plenty Foods opened today in Brewtown with the goal of offering locals an alternative to the supermarket duopoly operated by Foodstuffs and Woolworths. Owner Henry Hutcheon who also runs Supersave in Naenae says they faced technical difficulties on opening, but remains committed to affordable prices and community support. He says he would employ 40 staff to work at the store, mostly hiring from the local community, and aims to work closely with community groups to help keep essentials affordable.

Hutcheon began his career in the supermarket business in 2007 and acknowledges the challenges of sourcing for suppliers, especially the larger ones. The supermarket offers a full range of offerings including produce, meats, fish, a bakery, hot food, and a cafe, as well as featuring local products like a pie developed with CJ's Hangi.

Mayor Peri Zee praised the store's support for local producers and its role in boosting the competition, saying it could help lower prices and boost the local economy.

*Source: Radio New Zealand*

07/11/25



Google Maps

## Postal History Corner: Haywards Camp & Manor Park Camp Post Office

The Haywards Camp Post Office opened on 27 August 1951 and closed on 13 October 1961.

The Manor Park Camp Post Office opened on 25 May 1964 and closed on 30 October 1970.

In the early 1920s the George family owned land on both sides of the main highway south of the present Silverstream bridge. It was referred to as the Manor Park estate. In 1926 the fledgling Manor Park Golf Club (formerly the Karori Golf Club) leased some of the George river flats, while the next year Mrs George bequeathed to the nation a richly forested section of the hills to be named the Keith George Memorial Park\*3 in memory of a family member killed in action in World War 1.

A Railways Department workers camp was established at Haywards in 1951 to accommodate men employed on the electrification of the Hutt Valley railway. The camp housed upwards of 250 men. A dismantled building from the Trade Training School at Petone was rebuilt at Haywards Camp and became the YMCA Recreation Hall and included a canteen, store and post office. The post office was run by the YMCA and post office records indicate that the salary of the Postmaster was paid to the YMCA.

In late 1962 the Electricity Department leased the camp to house the workforce engaged on the connection of the North Island terminal of the Cook Strait power cable to the Haywards Hill sub-station. The number of workers increased and in 1964 a post office opened named Manor Park Camp in the same building as the previous Haywards Camp office.

In 1968 most of the workforce had left the camp and the post office was transferred to the Bell's home nearby. With the Bell's home needing to be demolished to allow for the realignment of the adjacent State Highway and no other resident being prepared to take over the office it was closed.  
\*

\* Source and further reading – <https://uhcl.recollect.co.nz/nodes/view/33796> – From the Summit to the Gorge (Pages 47 – 50) – Geo

To read this article in full - some data has had to be omitted for this publication to be present in the Wednesday Edition, please view <https://uhconnection.co.nz/general-news/postal-history-corner-haywards-camp-manor-park-camp-post-office/>

*A "thank you" to Andrew McNiven for sending this article to The Upper Hutt Connection.*

10/11/25





*Upper Hutt Libraries*

## **Silverstream Hospital event a hit at Wellington Heritage Festival 2025**

As part of the Wellington Heritage Festival 2025, the Heritage team at Upper Hutt Libraries recently hosted a well-attended event at Silverstream Retreat, celebrating the fascinating history of Silverstream Hospital.

The event was a resounding success, with around 120 attendees joining us on Saturday afternoon.

Feedback from those who attended has been overwhelmingly positive, with many sharing their personal connections to the hospital and its history. One of the most touching moments came when an attendee recognised herself in a historic photograph of the hospital's dispensary, where she had worked as the hospital's pharmacist. The audience gave her a heartfelt round of applause, creating an emotional and unforgettable moment.

The success of the event was made possible thanks to the warm hospitality of George Ross, Director of Silverstream Retreat, and his dedicated team, as well as the thoughtful preparation from our Heritage team.

We'd like to extend a special thank you to the Upper Hutt community for their support of this event. The Heritage team looks forward to continuing to share the rich and diverse history of Upper Hutt and its people through future events.

*Source: Upper Hutt Libraries*

07/11/25



*Upper Hutt City Council*

## **Strengthening Iwi Relationships**

Mayor Peri Zee and Councillors were honoured to attend a hui at Waiwhetū Marae on Wednesday.

Hosted by Ātiawa Nui Tonu – a collective of Mana Whenua partners including Taranaki Whānui ki Te Upoko o te Ika, the Wellington and Palmerston North Tenth Trust, and Te Rūnanganui o Te Ātiawa – the hui provided an opportunity for iwi to share their aspirations and for councils to strengthen relationships and deepen understanding.

The hui brought together representatives from Wellington City Council, Hutt City Council, Upper Hutt City Council, Greater Wellington Regional Council, and Tiaki Wai Metro Water – our region's new water entity – in a spirit of connection and shared purpose.

It was the first gathering of its kind, uniting Councillors and Mayors from across the rohe with the iwi collective.

For Mayor Zee, it was a significant step towards deeper partnerships with local iwi and hapu. "We are committed to listening, learning and leaning in so we can better work together and make good decisions for our tamariki and mokopuna" she said.

Held on the anniversary of the Parihaka invasion, the hui also served as an important reflection on resilience, peace, and unity – values that continue to guide our collective mahi today.

"We are deeply grateful to Ātiawa Nui Tonu for their invitation and maanaki to the Councils in their takiwā (area)"

*Source: Upper Hutt City Council*

07/11/25





*New Zealand Police*

## **Two car crashes close the River Road yesterday**

Two crashes, one involving a police car closed State Highway 2 for hours yesterday. One was at the stretch of State Highway 2 on the River Road, in-between the Totara Park and Whakatiki Street Intersections. The other, involving a police car and two other vehicles – The police car was on its way to the earlier crash, occurred on the River Road near Gibbons Street. No serious injuries were reported.

*Source: Radio New Zealand*

10/11/25



*Upper Hutt City Council*

## **Upper Hutt City Council adopts Annual Report**

*Published on 04 November 2025*

At an Extraordinary Meeting on Friday, Upper Hutt City Council adopted its 2024–2025 Annual Report, marking the close of the final report under former Mayor Wayne Guppy and the first under newly elected Mayor Peri Zee.

“This Annual Report outlines the wide range of infrastructure and services delivered by the Council for the community over the past year,” Mayor Zee said.

“I acknowledge the work of the previous Council, under Wayne Guppy’s leadership, and the efforts of the staff over the past year in challenging circumstances.”

A significant project delivered this year was the reopening of the H<sub>2</sub>O Xstream aquatic centre – a facility that was sorely missed by many during its redevelopment.

Another key highlight in the Annual Report was the increased investment in replacing water supply pipes – three times the amount of the previous year.

“The year has been challenging with rising cost pressures, infrastructure demands and large-scale changes in government direction, including water reforms,” she said.

“Establishing the region-wide water entity has been a major focus for the Council and will continue to be a focus for the new Council.”

On the financial side, Council continues to implement its Long Term Plan and Financial Strategy, which were designed to improve resilience under pressure.

*Continued on Page 11.*

Mayor Zee also emphasised the need to listen to what the community has said through the yearly surveys and address concerns around transparency and lack of engagement.

“Change is already underway, and the new Council looks forward to working more closely with the community on the issues that matter most,” he said.

“The new Council will soon begin work on an Annual Plan to be delivered from 1 July next year.”

The Annual Report 2024–2025 is available at:  
<https://www.upperhutt.govt.nz/files/content/public/v/3/news/upper-hutt-city-council-adopts-annual-report/extraordinary-council-agenda-20251031.pdf>

Source: Upper Hutt City Council

05/11/25



AI Generated

## Send an article to The Upper Hutt Connection

I always welcome to any articles that are related to Upper Hutt. You can either send in articles by filling in the form on the website, or by messaging The Upper Hutt Connection on Facebook.

<https://uhconnection.co.nz/send-an-article-to-the-upper-hutt-connection/>

<https://www.facebook.com/TheUHConnection>

To better understand why I encourage the sending of articles and events from members of the public, please visit the link: <https://uhconnection.co.nz/it-takes-the-people-of-upper-hutt-to-make-the-upper-hutt-connection/>

Cheers, Ben Knowles - Editor / Operator @ The Upper Hutt Connection

## LETTERS TO THE EDITOR



AI Generated

## Compulsory voting response to Chris Barnes – Teresa Homan

I agree with Chris Barnes, NZ should look at making voting compulsory in local and national elections. With just over 30% of people voting in local elections, not only in Upper Hutt but across the Wellington region, it means that the region's councils have no mandate to make decision on behalf of the 70% of electors who didn't vote. This is true of all councils as well as the regional council. A more worrying issue is only two councils had a vote on discussing merits of Amalgamation and of that just over 15% thought a discussion was warranted. The Mayor of Wellington recently said he thought the Wellington region should consider Amalgamation. He too was only elected by a small number of voters. Adding to the concern is Upper Hutt residents were not even allowed a vote on a Māori ward and the last council voted for our water assets and delivery to be turned over to Metro water corporation with little community wide consultation, another decision, by a non-representative council. Council and governments are supposed to represent all views of the people they are elected to represent. We currently have elected representatives that have not been elected by a majority of those eligible to vote, compulsory voting would change that as representatives would need to be able to represent wider views or they would not be elected. Currently we have the tyranny of the few making decision for all.

Teresa Homan

Upper Hutt

A “thank you” to Teresa Homan for sending this letter to The Upper Hutt Connection.

## SPORTS



*Upper Hutt United Cricket Club*

### Cricket results for the weekend: Saturday 8th of November / Sunday 9th of November

Results from the weekend — highlighted by another good win for our Premier Men, making it 2/2 in the Ewen Chatfield Trophy, and two T20 wins for the Eagles on Saturday!

To see all images associated with this article, please view <https://uhconnection.co.nz/sports/upper-hutt-united-cricket-club/cricket-results-for-the-weekend-saturday-8th-of-november-sunday-9th-of-november/>

*Source: Upper Hutt United Cricket Club*

10/11/25

**COMMUNITY EVENTS:** To view all upcoming and regularly occurring community events, please visit <https://uhconnection.co.nz/community-events/>



*Retrieved from Whirinaki Whare Taonga*

### A Magical Winter: Saturday 6th of December / Sunday 7th of December

Location: Whirinaki Whare Taonga

Presented by The 8th Count

- Saturday 6 December | 11.00am
- Saturday 6 December | 3.00pm
- Sunday 7 December | 1.00pm

Snow-much-fun

Join us for The 8th Count's magical end-of-year recital – A Magical Winter!

Please note: Show contains use of strobe lighting.

Adult \$40.00 | Child (under 12) \$15.00 | Babes in Arms Free | Booking & transaction fees apply to all sales | Bookings required

Book through iTICKET: <https://www.iticket.co.nz/events/2025/dec/a-magical-winter>

*Source: Whirinaki Whare Taonga*

10/11/25



*Brewtown Upper Hutt*

## **Brew Year's Eve: Wednesday 31st of December, 4.00 pm – 1.00 am**

**PLEASE NOTE: THIS EVENT IS R18**

Location: Brewtown Upper Hutt

Wellington's biggest New Years Eve party is back at Brewtown.

Celebrate Brew Years Eve with the ultimate party night of legendary Kiwi anthems, wall to wall bangers and classic 80s hits on a night where the dancefloor never stops.

The Soundtrack to Your Night:

Our epic lineup will take you back in time with all your classic favourites:

- Dragon — get ready for timeless anthems like April Sun in Cuba and Rain.
- The Jordan Luck Band — Kiwi sing-alongs like Why Does Love Do This to Me and Victoria.
- The Automatic 80s — taking you back with the biggest 80s dancefloor hits.
- The Blueprint — Wellington's best rock covers band taking you through to midnight.

Say goodbye to 2025 with a bang — party with us as we transform Brewtown's covered Greenspace into a full-blown New Year's Eve Party, packed with live music, massive party vibes, and all the magic to make your countdown unforgettable.

- Wednesday 31st December
- Brewtown, Upper Hutt – R18

Tickets: <https://brewtown.flickit.co.nz/events/b728f83c-d139-454c-9ddb-b7c78e0bed4e/reservation>

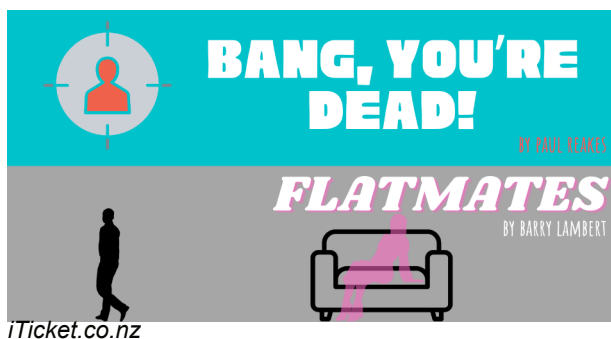
This isn't just another night out — it's Wellington's biggest party of the year!

So round up your crew, grab your tickets, and get ready for confetti blasts, big sing-alongs, and festival-scale fun as we count down to midnight together.

*Source: Brewtown Upper Hutt*

06/11/25





iTicket.co.nz

## Heretaunga Players Double Bill – Flatmates & Bang You're Dead: Thursday 27th of November – Saturday 6th of December

Come along to Heretaunga Players (52 Ward Street, Upper Hutt) and watch a Double Bill of short 1-act comedy mysteries: 'Flatmates' by Barry Lambert and 'Bang, You're Dead!' by Paul Reakes.

Tickets are \$23 plus booking fee, available from the team at Whirinaki Whare Taonga (527 2168) or via this link: <https://www.iticket.co.nz/events/2025/nov/flatmates-and-bang-youre-dead/>

Opening night is Thursday 27-Nov and we close on Saturday 6 December. Don't Wait! Get your tickets now!

**Flatmates synopsis:** Ben is annoyed to find a strange woman in his flat who claims to have been living there than he has. When his soon-to-be ex-wife and her lawyer arrive with the divorce papers, Ben's new flatmate proves to have very useful powers of persuasion.

**Bang, You're Dead! synopsis:** Lydia and her boyfriend Marcus rehearse the murder of Theo, Lydia's husband, which they are to commit that evening. When the victim and a "perfect witness" arrive not all goes according to plan.

A "thank you" to Georgina Reynolds – Heretaunga Players Inc. for sending this article to The Upper Hutt Connection.

10/11/25



## Upper Hutt City of Song: Saturday 13th of December, 5.00 pm

Location: Harcourt Park

Come along a join us for the evening, bring the family, bring some friends, relax and enjoy an entertaining evening of talent.

We have the amazing Frankie Stevens returning as our MC.

Please share this post far and wide – let's have a cracker of an event in Upper Hutt

13th December – 5pm onwards

Free entry

A "thank you" to Rose Vailima for requesting that this article be put up on The Upper Hutt Connection.

05/11/25





*Upper Hutt Cosmopolitan Club*

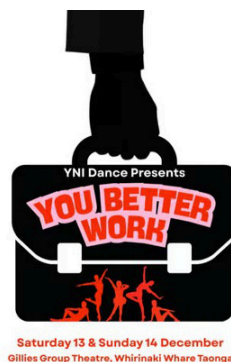
## Upper Hutt Cossie Club looking for the 2026 Charity of the Year: Accepting nominations until the 21st of November

Hey everyone, we are looking for our next great Charity of the Year partner to support! If you know of a great charity the benefits Upper Hutt please contact them and get them to email us and tell more about what they do and what the support would mean for them.

generalmanager@cossieclubs.org.nz

*Upper Hutt Cosmopolitan Club gave permission for this article to be put up on The Upper Hutt Connection.*

06/11/25



*Retrieved from Whirinaki Whare Taonga*

## You Better Work: Saturday 13th of December / Sunday 14th of December

Presented by YNI

- Saturday 13 December | 10.00am (Act One)
- Saturday 13 December | 1.00pm (Full Show)
- Saturday 13 December | 5.00pm (Act Two)
- Sunday 14 December | 10.00am (Full Show)
- Sunday 14 December | 3.00pm (Full Show)

YNI Dance is proud to present their end of year dance show for 2025 – You Better Work

Please see iTICKET website for pricing |  
Booking & transaction fees apply to all sales |  
Bookings required

Book through iTICKET: <https://www.iticket.co.nz/events/2025/dec/you-better-work>

*Source: Whirinaki Whare Taonga*

10/11/25



## **Laugh with Laughing Club: Every Monday, 6.30 pm – 7.30 pm**

Laughing yoga will finish on 15 Dec and begin again on 26 Jan

*A "thank you" to Sharyn Rive for sending this article to The Upper Hutt Connection.*



## **Taoist Tai Chi: Mondays, 6.30 pm – 8.30 pm**

Taoist Tai Chi sessions

Mondays 6.30-8.00pm.

Trentham School Hall.

Start any time.

Reduce stress, find calmness, balance, strength and flexibility with Taoist Tai Chi™ practice. Join us to have a go a great way to improve your life and health. <https://www.taoisttaichi.org/find-a-location/>

*A “thank you” to Glenn for sending this article to The Upper Hutt Connection.*

13/05/25

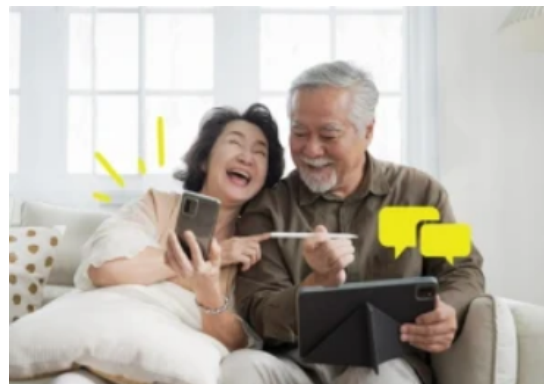


*AI Generated*

## **Playgroup at St. Hilda’s: Wednesday mornings during term time, 9.30 am – 11.00 am**

Ages from babies to school age are welcome, depending on the circumstances.

*A “thank you” to Jocelyn for sending this article to The Upper Hutt Connection.*



*Upper Hutt Libraries*

## **SeniorNet: Tuesdays 1.30 pm – 2.30 pm**

Location: Upper Hutt Library

Not completely comfortable with technology? Wondering how you are going to cope when everyone is using their mobile phones?

Come along to Upper Hutt SeniorNet, every Tuesday at 1.30 – 2.30pm at the library where a happy group of older people meet to discuss technology and learn how to be confident in the digital world.

Just turn up and say hello!

*A “thank you” to Heather Newell for sending this article to The Upper Hutt Connection.*

29/04/25



### St. Margaret's Playgroup: Tuesday Mornings, 10.00 am – 11.30 am (term time only)

Tuesday mornings during term time 10-11.30am. Come along and join in the fun with your preschool children. Meet other parents and carers, relax and enjoy a cuppa while the kids play. (Please note all children must be accompanied by an adult!). Looking forward to seeing you. Start's Tuesday 13 May 2025.

A "thank you" to St. Margaret's Church – Silverstream for sending this article to The Upper Hutt Connection.

06/05/25

### Rimutaka Baptist Church Playgroup: Fridays, 9.00 am - 11.30 am during term time



Contributor: Kerry



Contributor: Cushla

### Upper Hutt Baptist Church playgroup: 9.30 am – 11.30 am, Tuesday mornings

If you're looking for a Tuesday activity for your little ones then come check out UHBC Playgroup at Upper Hutt Baptist Church, corner of Milton St and Fergie Drive.

We run 9.30am – 11:30am each Tuesday morning and you can drop in anytime that suits.

Lots of fun stuff to play with and a different activity each week to stimulate young minds.

Morning tea for children and adults provided.

Everyone welcome

Gold coin donation

Hope to see you there

Cushla gave permission for this article to be put up on The Upper Hutt Connection.

28/03/25



## BEYOND UPPER HUTT



*Ilana Miller, Free For All Charitable Trust*

### Give Back This Christmas with Free For All

This Christmas, Free For All — a zero-waste charity redefining how Aotearoa thinks about “stuff” — is inviting everyone to give back, not throw away.

From their redistribution hub in Petone, Free For All rescues over 2.5 tonnes of usable goods every week — homewares, toys, books, clothing, furniture, and more — keeping them out of landfill and in the hands of people who need them most. Everyone’s welcome to drop off or collect items: no judgment, no paperwork — just community generosity in action.

Beyond reducing waste, Free For All provides real financial relief to hundreds of Wellington whānau each week. The Pay-It-Forward programme lets local businesses and individuals sponsor entry vouchers for families doing it tough — ensuring everyone can access essentials with dignity.

#### How to help this Christmas

There are lots of ways to get involved and make a difference this festive season — every small action helps keep our community thriving.

- Donate your pre-loved goods — every item makes a difference
- Shop sustainably at Free For All — find treasures and give them a second life
- Host a workplace donation drive — declutter your office, we’ll take almost anything and put it to new use
- Volunteer — whether as an individual or a team, it’s a rewarding way to give back with purpose
- Sponsor Pay-It-Forward vouchers to directly support local families

Together, we can help keep useful goods circulating, communities thriving, and Aotearoa’s landfills a little emptier this Christmas.

- Don’t delay — visit us today!
- 17 Te Puni Street, Petone opening hours: Tuesday–Sunday, 10 am–5.30 pm
- Donation drop-offs: Armidale Street, Wednesday–Sunday, 10 am–3.30 pm
- Contact us: [enquiries@freeforall.co.nz](mailto:enquiries@freeforall.co.nz) or text 022 542 5664
- Follow us: [facebook.com/www.freeforall.co.nz](https://facebook.com/www.freeforall.co.nz)

*A “thank you” to Ilana Miller, Free For All Charitable Trust for sending this article to The Upper Hutt Connection.*

05/11/25



## GARAGE SALES



*Menzshed Upper Hutt*

**Menzshed Upper Hutt Garage Sale: Saturday 22nd of November / Sunday 23rd of November, 10.00 am – 3.00 pm | McLeod Park, McLeod St, Upper Hutt**

A range of hand and power tools including garage, garden and workshop, bikes, sundry DIY items, chairs etc.

Cash preferred.

*A "thank you" to MenzShed Upper Hutt for sending this article to The Upper Hutt Connection.*

*10/11/25*

## COMMUNITY SUPPORT



*AI Generated*

### Strings Attached Ukulele Group

We need a few new players/performers for our ukulele /singing/ performance group, based in Upper Hutt. More than anything we love people with enthusiasm who are keen to interact with an audience. We perform mostly at retirement villages but have also performed at birthday parties and celebrations of life. We focus on songs from the 50's to the 80's but most importantly we are there for our audiences and what they enjoy.

- you need to be able to hold a tune.
- the ability to play a ukulele would be great but if you don't we can teach you!

If you are keen or know of someone who would be an asset to our group' please ring Virginia on 0273920920.

*A "thank you" to Virginia for sending this article to The Upper Hutt Connection.*

28/07/25

### The Upper Hutt Womens' Carers' Group

Our group consists of women who have someone in their lives who has had a stroke or has Alzheimers, that they are caring for.

We meet once a fortnight for two hours. We offer a supportive listening environment with lots of laughs as we walk our challenging journeys together. If there are women out there who feel we could be of support, please contact Jenny on 0284340102 for further details.

*A "thank you" to Virginia for sending this article to The Upper Hutt Connection.*

28/07/25



*AI Generated*

[RETURN TO CONTENTS](#)

## RECIPES

Stuck for an idea to what to do for dinner? Check out the different recipes in the meals, desserts, and baking sections below.

Cheers, Ben

<https://uhconnection.co.nz/recipes-meals/>

<https://uhconnection.co.nz/recipes-baking/>

<https://uhconnection.co.nz/recipes-desserts/>



AI Generated

## Business Advertising

### A webpage on The Upper Hutt Connection at only \$1 a day

Is your business lacking a website, and you don't want to bother with setting one up yourself? The Upper Hutt Connection can offer you a webpage on The Upper Hutt Connection at only \$1 a day (billed at \$30 a month). Include all the text, images, links etc that you like.

**Advertise your business in The Upper Hutt Connection's Wednesday Edition for only \$10 a week - be seen by all 1,078 subscribers.**

Would you like to advertise your business weekly in The Upper Hutt Connection's Wednesday Edition? You can have your business advertised at only \$10 a week (billed at \$40 a month). Include a small paragraph of text along with a small image – OR an image alone, with all your business info included in the image itself. A small line of text can be included for a link to your website, etc. If you have a request where you'd like your ad to be placed in the Wednesday Edition then please say – otherwise I'll use my own judgement.

### Restrictions

As for restrictions on who can advertise, the only exclusion is the sex industry. Everyone else is welcome to advertise on The Upper Hutt Connection.

If you're interested in advertising on The Upper Hutt Connection, please email me at [editor@uhconnection.co.nz](mailto:editor@uhconnection.co.nz)

Cheers, Ben Knowles – Editor / Operator @ The Upper Hutt Connection.

***Please note that advertising on The Upper Hutt Connection is only open to those based in Upper Hutt – That is as north as the Remutaka Hill, the border of Akatawara Road between Upper Hutt and Kapiti, and as south as Reynolds Bach Drive, Stokes Valley.***



AI Generated

[RETURN TO CONTENTS](#)

## WORSHIP SERVICES

### Heretaunga Community Church

*Live for Jesus, Share his Love*

Our Sunday morning service is at 10am and everyone is welcome.

We would love you to stay afterwards for fellowship over morning tea.

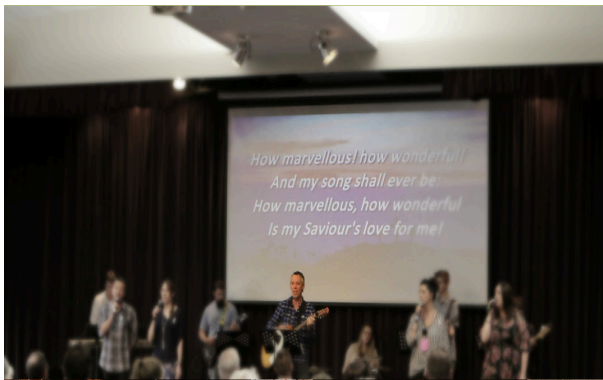
Our Creche for children under 3 1/2 years runs every Sunday morning. Our Children's Church runs Sundays during school terms.

Services are live-streamed on YouTube: Heretaunga Community Church

Address: 51 Lane St, Wallaceville, Upper Hutt 5018, New Zealand

Email: [admin@heretaunga.com](mailto:admin@heretaunga.com)

Website: <https://www.heretaunga.com>



Heretaunga Community Church

### St. Margaret's Presbyterian Church - Silverstream

**You will find us at:** 4-6 Dunns St, Silverstream, Upper Hutt

**The Minister:** The minister at St Margaret's is Rev Rodney Ramsay. Rodney is on-site most days from Tuesday to Friday and anyone is welcome to drop in for a chat over a cup of coffee/tea.

If you have any need to contact Rodney he can be reached at the office number 5279604, on his mobile 0211259835 or via email at [minister@stmargaretssilverstream.org.nz](mailto:minister@stmargaretssilverstream.org.nz)

**Worship services:** Our worship services take place on Sundays at 10.00am.

The First Sunday of each month is a Communion Service and the second Sunday is a Family Service.

Our services are fairly traditional, and we have a very warm and welcoming congregation. All are welcome.

Our services are live streamed on Zoom. If you wish to receive the link, please text Lynley McInnarney at 027 278 0010 or send an email to [mcinnarneys@gmail.com](mailto:mcinnarneys@gmail.com).

We offer children's church for primary school age that happens during the main church service.

St Margaret's runs a teenage youth group on the second and fourth Thursday of the month in the church hall and lounge during term time. Youth group runs from 6.30pm to around 8.00pm.

**Other contact details:** The Lay leader (Session Clerk) at St Margaret's is Chris Rosanowski and he can be contacted at [rosanowskic@gmail.com](mailto:rosanowskic@gmail.com)

Please visit our website for further information including the hire of our facilities.

<https://stmargaretssilverstream.org.nz>



St. Margaret's Presbyterian Church - Silverstream

## Rimutaka Baptist Church

**Location:** 2 Akatarawa Road, Brown Owl, Upper Hutt

We would love to get to know you, so come along to one of our groups and meet others in your community.

### Tuesdays

**5 Loaves and 2 Fish Food Pantry: 11am – 12noon – Free**

Food is available for those who are needing extra assistance. If you have food to contribute to contribute to the pantry, feel free to drop off at the church.

### Wednesdays

**Community craft session: 10.30 am – 12noon – Free**

Bring along your craft and join us for morning tea.

**Community Lunch: 12noon – Free**

All welcome

**Bible study: 7.00 pm – Free**

All welcome to learn more about the Christian faith.

### Fridays

**Rimutaka Playgroup: 9.00 am – 11.30am – Donation**

All caregiver and preschoolers are welcome. This is a fun, friendly, safe environment. Morning tea is provided.

**Youthgroup: 7.00 pm – Donation**

Contact the church for details

### Sundays

**Church Service: 10.00 am**

All welcome, and please stay for morning tea after the service.

Sunday online recording available on YouTube from 5.00 pm



Google Maps: Sky Stream Media





*St. Hilda's Anglican Church*

## **St. Hilda's Anglican Church**

**Location:** 35 Cruickshank Road, Clouston Park, Upper Hutt

**Email Church Office:** sthildasuh@gmail.com

### **Who we are:**

A congregation of faithful followers of our Lord Jesus Christ, who draw on the Anglican tradition to support a lively expression of our faith.

Our recently unanimously agreed vision statement is: St Hilda's – a vibrant, faith-based presence within our community.

### **What we do:**

- We are a community of people who come together to worship God, to grow in relationship with one another and with the wider community.
- We offer loving service to God, one another, the people of Upper Hutt and the world.
- We are disciples of Jesus, the Lord of Love.
- We believe in the Christian Creator, Redeemer and Giver of Life. We are inspired and guided by the Holy Bible. We seek to grow in faith.
- We welcome newcomers to our parish family with warm hospitality. We provide a wide range of activities, both spiritual and secular. We encourage all to develop their relationship with Christ through our worshipping community.
- In recent years we have turned our focus outwards to serving our community.

### **Weekly services:**

*Sunday 9.30am: Traditional NZ Anglican Worship*

This is a comfortable, family-friendly feeling service, although it follows the traditional liturgical format. The service order alternates between the three ANZPB Eucharistic (communion) liturgies. There is always a sermon with a liturgical assistant leading the worship; when a priest is not available. The communion is led by one of our leaders licenced for reserved sacrament.

### **Thursday 10.00am: Traditional Communion Service**

The service order follows ANZPB with the Sunday sermon being repeated here. Our services are supported by a good tech suite, including two large monitors installed at the front of the church, and a quality sound system.

Prayer books remain available in the pews for anyone who prefers to use them.

*Sue sent this article to The Upper Hutt Connection / Source: St Hilda's Anglican Church Upper Hutt*



*Silverstream Reformed Church*

## **Silverstream Reformed Church**

**Location:** 8 Blue Mountains Road, Silverstream

### **What we Believe:**

We believe that Jesus Christ is the only Saviour and the Sovereign Lord over all of life. We are fully committed to the Bible in its entirety as the Word of God. We believe that theology is important, it is vital for the health of the church, and without sound doctrine the church decays. Throughout history, the church has confessed what it believes by faithfully summarising the truths of the Bible in written forms known as creeds and confessions. These confessions do not hold the same authority as the Bible, but they help to summarise the Bible's teaching. Ultimately, the Bible remains our only rule for faith and life.

### **Who we Are:**

Our Church is a family church, with a mixture of young families, retirees, couples, single people and youth. We have approximately 200 members, from different backgrounds, meeting together because we share a common faith in the Lord Jesus Christ

### **Service Times:**

Our worship services are on Sunday at 10 AM and 4 PM, and we would love to see you there. Our friendly greeters will meet you at the door and answer any questions you have.

Like to know more? Visit our website at: <https://silverstreamrcnz.co.nz/>

*Silverstream Reformed Church sent this article to The Upper Hutt Connection.*

11/12/24



*Upper Hutt Uniting Parish*

## Upper Hutt Uniting Parish

**Address:** Cnr 1 Benzie Avenue / 780 Fergusson Drive, Upper Hutt

### **Worship Services:**

Upper Hutt Uniting provides Presbyterian – Methodist church services each Sunday at 10am at the Wesley Centre (Te Whanau Lounge) located at 1 Benzie Avenue. We are fortunate to have a revolving preaching team, of both Ordained and Lay Preachers, who offer an interesting and different variety of relaxed preaching styles. After service refreshments and social time. Visitors are welcome to join us.

### **Wesley Centre:**

A multi-use community centre located close to the Upper Hutt city centre, hosting 5 separate churches (Presbyterian -Methodist, Tongan language Methodist, Samoan Assembly of God, Messianic Saturday study group and a church from Myanmar – contact us for details on other groups services), together with the Wesley Thrift Shop and Upper Hutt Foodbank, plus multiple regular and casual community organisations meetings and as a venue for group and family events.

Wesley Centre provides a modern church space, a gymnasium style hall for functions, two kitchens and two spacious meeting rooms.

For enquiries regarding building use, contact the Parish Office 528 8915, or the Property Manager 0274 456 992, or email [property.uhup@outlook.co.nz](mailto:property.uhup@outlook.co.nz).

Parish Office:

64 Martin Street – open Thursday / Friday 10am to 3pm

Ph: (04) 528 8915

Email: [uhup@xtra.co.nz](mailto:uhup@xtra.co.nz)

Website: <http://www.upperhuttuniting.nz>

*A “thank you” to Bill Lindsay for sending this article to The Upper Hutt Connection.*

**[RETURN TO CONTENTS](#)**

## ENTERTAINMENT

### What's new at Monterey Cinemas? Releasing 13th of November 2025

View all films releasing this week at <https://www.montereyupperhutt.co.nz/coming-soon>

#### HAMILTON

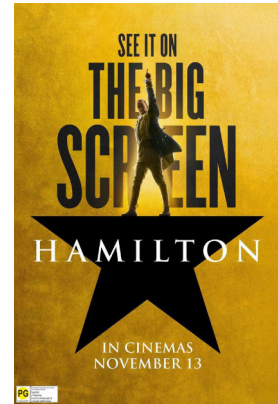
Running time: 179 minutes

Rated: PG (Violence, coarse language & sexual references)

The real-life of one of America's foremost founding fathers and first Secretary of the Treasury, Alexander Hamilton. Filmed live on Broadway from the Richard Rodgers Theatre with the original Broadway cast.

Book here: <https://www.montereyupperhutt.co.nz/movie/hamilton>

View trailer at IMDB.com: [https://www.imdb.com/title/tt8503618/videoplayer/vi1775224857/?ref=mv\\_sr\\_srsq\\_1\\_tt\\_1\\_nm\\_7\\_in\\_0\\_q\\_Hamilton](https://www.imdb.com/title/tt8503618/videoplayer/vi1775224857/?ref=mv_sr_srsq_1_tt_1_nm_7_in_0_q_Hamilton)



Hamilton

#### NOW YOU SEE ME: NOW YOU DON'T

Running time: 113 minutes

Rated: M (Violence, offensive language, sexual reference & content that may disturb)

The Four Horsemen return along with a new generation of illusionists performing mind-melding twists, turns, surprises, and magic unlike anything ever captured on film.

Book here: <https://www.montereyupperhutt.co.nz/movie/now-you-see-me-now-you-dont>

View trailer at IMDB.com: [https://www.imdb.com/title/tt4712810/videoplayer/vi2958215193/?ref=mv\\_sr\\_srsq\\_1\\_tt\\_8\\_nm\\_0\\_in\\_0\\_q\\_Now%2520you%2520see%2520me](https://www.imdb.com/title/tt4712810/videoplayer/vi2958215193/?ref=mv_sr_srsq_1_tt_8_nm_0_in_0_q_Now%2520you%2520see%2520me)



Now you see me: Now you don't

*Continued on Page 29.*

[RETURN TO CONTENTS](#)

## THE RUNNING MAN

Running time: 140 minutes

Rated: R16 (Violence, cruelty & offensive language)

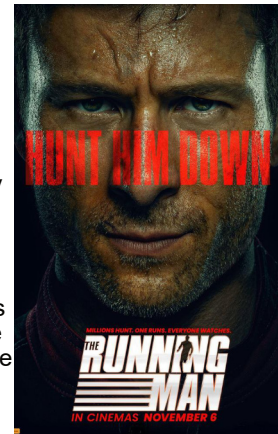
In a near-future society, The Running Man is the top-rated show on television—a deadly competition where contestants, known as Runners, must survive 30 days while being hunted by professional assassins, with every move broadcast to a bloodthirsty public and each day bringing a greater cash reward. Desperate to save his sick daughter, working-class Ben Richards (Glen Powell) is convinced by the show's charming but ruthless producer, Dan Killian (Josh Brolin), to enter the game as a last resort. But Ben's defiance, instincts, and grit turn him into an unexpected fan favorite—and a threat to the entire system. As ratings skyrocket, so does the danger, and Ben must outwit not just the Hunters, but a nation addicted to watching him fall.

Book here: <https://www.montereyupperhutt.co.nz/movie/the-running-man>

View trailer at IMDB.com: [https://www.imdb.com/title/tt14107334/videoplayer/vi1048299545/?ref=mv\\_sr\\_srsq\\_2\\_tt\\_6\\_nm\\_1\\_in\\_0\\_q\\_The%2520Running%2520Man](https://www.imdb.com/title/tt14107334/videoplayer/vi1048299545/?ref=mv_sr_srsq_2_tt_6_nm_1_in_0_q_The%2520Running%2520Man)

Source: Monterey Cinemas Upper Hutt

10/11/25



The Running Man